



GB GROUP



GB PLAS

**YOUR PREMIUM
PLASTIC SOLUTION**

www.gbplas.com



CUSTOMER SATISFACITON

Based on your unique specifications and requirements, GB PLAS can custom manufacture plastic extrusion products which are rendered in vibrant, true-to-life colour or crystal clear transparent sheets. We are able to achieve these distinctive product characteristics by leveraging our specialise extrusion know-how and sophisticated thermoforming, press forming and vacuum forming processes.

GLOBAL MARKET

Established in 2003, GB PLAS is focused on providing excellence to our customers across the world in line with our vision to become one of the leading global plastic extrusion specialists. Every year, we are broadening our global reach to penetrate more highly competitive markets in overseas countries. We are currently exporting to more than 60 country all over the world, like Canada, Dubai, New Zealand, Australia, India, Europe, Vietnam and among other Southeast Asia country.



VISION AND MISSION

GB PLAS is determined to penetrate new overseas markets by focusing on improving our capabilities in order to become one of the exclusive major market leaders for our whole product scopes.

MISSION AND VALUES

The fundamental goal of GB PLAS is ensuring maximum customer satisfaction and quality assurance. To that end, we continuously strive to improve all areas of operations under the umbrella of world class excellence.

ABOUT US

GB PLAS is a leading global plastic specialist with world-class manufacturing capabilities.

Our company offers a complete raw material production facility from virgin resin, repelletized resin and recycled scrap materials through our state-of-the-art manufacturing process.

Our manufacturing set-up includes vital key processes such as material purification, material separation and compounding colour, through our repelletizer machine.

As a specialist in plastic industry, we are able to customize various size and thickness of plastic sheet according to your requirement and specification.

GB PLAS employs the sophisticated process of thermoforming in its production process, where raw sheets are exposed to high temperatures to render them pliable. In this condition, they easily adhere to the contours of the mold and assume the desired shape and specifications. The trimming process is executed before the cooling process has set in.

We utilize three different applications in the thermoforming process, namely, Vacuum Forming, Mechanical Bending (or Blow Forming) and Pressure Forming, each designed to fulfill its specific requirement.

PLASTIC EXTRUSION

Introduction Plastic Extrusion

GB PLAS uses sophisticated extrusion technology from the Japan and Europe which have the capability of producing different grades of plastics with high precision tolerance and of different thicknesses and other required specifications to meet your most exacting demands.

Plastic Material

- PMMA (Acrylic) •PC (Polycarbonate)
- PETG •HIPS •GPPS •MS •ABS •HDPE
- PP and others



Below are the listed Advantages of extruded plastic:

- High Volume
- Low Cost
- Fast Production
- Versatile
- Co-Extrusion
- Extrusion Coating
- Key Characteristics

PRODUCT SPECIFICATION:

Maximum usable width: **2100mm**
 Length: **Custom desire (sheet / roll form)**
 Thickness: **0.3mm to 30.0mm**
 Colour: **Natural colour or custom colours**
 Monolayer Extrusion & Co-Extrusion (B-A-B)
 Masking Protection: Non-adhesive paper / PE film

PLASTIC EXTRUSION APPLICATIONS

The wide variety of different shapes, textures and colours produced by plastic extrusion make it the ideal choice to fabricate a diversity of products.

- APPLIANCES**
Control Panels, Display Screens, Holders, Monitor Screens, etc
- AUTOMOTIVE PARTS**
Car Accessories, Car Interiors, License Plates, etc
- FURNITURE**
Chair, Magazine Trays, Multi-Trays, Storage Racks, Tables, etc
- LIGHTING**
Diffusers, Holders, Lighting Panels, Lighting Screens, etc
- PALLETS**
Commercial and Industrial
- SCREENS**
Bathroom Screens, Shower Screens, Motorcycle Helmet Visors, Noise Barriers, Office Partitions, Pool Partitions, Wind Screens, etc
- SIGNAGE**
Commercial Signs, Direction Signs, Directory Signs, Display Panels, Embossed Signs, Free Standing Signs, Suspended Signs, etc

PRODUCT RANGE:

ACRYLIC (PMMA/ HIPMMA) SHEET

POLYSTYRENE (GPPS/HIPS) SHEET

POLYCARBONATE (PC) SOLID & PROFILE SHEET

POLYCARBONATE (PC) TWIN WALL HOLLOW SHEET

SMMA (METHYL METHACRYLATE STYRENE) SHEET

PLASTIC COMPOSITE PANEL (PCP)



PANELS

Display Panels, Lighting Panels, Noise Barriers, Partitions, etc



ROOFING

Carports, Home Extension, Roof Lights, Skylights, Verandas, Walkway Roofing, etc

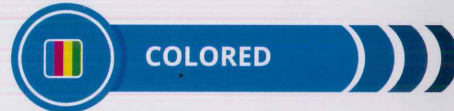


PATTERN SHEET

• Rain Drop • Tree Bark • Embrose
• Star Drop • Prismatic



TRANSPARENT



COLORED



STRAIGHT



CORRUGATED



TECHNOLOGY

:: Manufacturing

Our manufacturing process employed high-tech machinery which imported from Japan and Europe. It's superiority ensures consistency of color vibrancy, precision of tolerance, and high quantity product. With these advance technology, GB able to perform a wide range of functions with fast turnabouts to meet the growing needs of the plastic industry.

:: Repelletizer

Using hi-tech material repelletizer technology, the machine is able to fulfill specific colour requirements through compound powder pigment with plastic material. Another duty of this process is to purify and remove contamination in the plastic materials.

:: Mixer

It evenly mixes the compounded master batch to produce vibrant and clear colours.

:: Crusher

It crushes the material in order to achieve the highest purity for material. GB PLAS has different crushing machines dedicated to preventing mixture contamination of different materials.

PACKING & DELIVERY

Once the order is complete, plastic sheets are packed using quality cushioning material. They are then safely secured within delivery trucks to prevent damage during transportation. Delivery times vary according to destination and shipping schedules.



QUALITY CONTROL

As soon as they are formed, the plastic sheets are screened for any deformities or defects. Those that do not meet the grade are sent to be scrapped.

The plastic sheets that pass the quality inspection area then wrapped and stored in a spacious warehouse to prevent damage. Each order of plastic sheets is stored separately from to facilitate inventory management.



POLYCARBONATE (PC) TWIN WALL HOLLOW SHEET

- Light Weight & Easy Handling
- Energy Saving
- Heat Insulation
- Weather Resistance With UV
- High Impact & Break Resistant
- Beautiful In Colours



GB PLAS SDN BHD

(638291-V)

YOUR PREMIUM PLASTIC SOLUTION

SPECIFICATIONS			
Thickness	4mm	5mm	6mm
Width	915mm - 2100mm		
Length	Max 5800mm or cut to size		

APPLICATIONS
• Roof glazing, Canopies
• Signage, Light Box
• Agriculture Green & Sheds
• Roofing for stadiums, Gymnasiums & Sport Clubs

MATERIAL SPEC

PHYSICAL PROPERTIES	METRIC	ENGLISH	COMMENTS
Density	1.20g/cc	0.0434 lb/in ³	ISO 1183
Water Absorption	0.20%	0.20%	in water, 23 ^o C 24h; ISO 62
Linear Mold Shrinkage	0.0050-0.0070 cm/cm @ Thickness 4.00 mm	0.0050-0.0070 in/in @ Thickness 0.157 in	
Linear Mold Shrinkage, Transverse	0.0050-0.0070 cm/cm @ Thickness 4.00 mm	0.0050-0.0070 in/in @ Thickness 0.157 in	
Melt Flow	8.4g/ 10 min @ Load 1.20kg, Temperature 300 ^o C	8.4g/ 10 min @ Load 2.65 lb Temperature 572 ^o F	ISO 1133

MECHANICAL PROPERTIES	METRIC	ENGLISH	COMMENTS
Tensile Strength, Yield	62.0 MPa	8990 psi	50mm/min; ISO 527
Elongation at Break	> = 50%	> = 50%	50mm/min; ISO 527
Elongation at Yield	6.00%	6.00%	50mm/min; ISO 527
Tensile Modulus	2.40 GPa	348 ksi	1mm/min; ISO 527
Flexural Strength	93.0 MPa	13500 psi	2mm/min; ISO 178
Flexural Modulus	2.35 GPa	341 ksi	2mm/min; ISO 178
Charpy Impact Unnotched	N/B	N/B	ISO 179
Charpy Impact Notched	7.60J/cm ²	36.2ft-lb/in ²	ISO 179

OPTICAL PROPERTIES	METRIC	ENGLISH	COMMENTS
Refractive Index	1.585	1.585	ASTM D542
Transmission, Visible	88% @ Thickness 3.00 mm	88% @ Thickness 0.118 in	ASTM D1003

INSTALLATION INSTRUCTION:



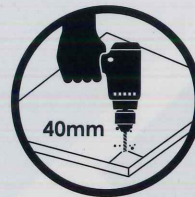
THIS SIDE UP

UV protection coating is on the side of printed packing film. Installed the UV protection side up and removed all packing film immediately after installation.



CUTTING

Use an electric or fine tooth saw only for cutting. To prevent rough cutting and safety matter, the sheet must be properly supported before cutting.



DRILLING

All holes must be drilled at least 40 mm from the edge of sheet. Consider to the expansion, hole must drilled approximately 3 mm large than the fixing screw.



KEEP AWAY

Keep the sheet away from incompatible chemical, concrete and oil which may cause the sheet damaged.



CHANGKAT PLANT

No. 3785, Jalan Changkat, 14300 Nibong Tebal, S.P.S Penang, West Malaysia. Tel: +604 594 2333 Fax: +604 593 8718



BUKIT PANCHOR PLANT

2757, Mukim 7, Lorong Industri 2, Taman Perindustrian Bukit Panchor, 14300 Nibong Tebal, S.P.S Penang, West Malaysia.

Tel: +604 598 3996

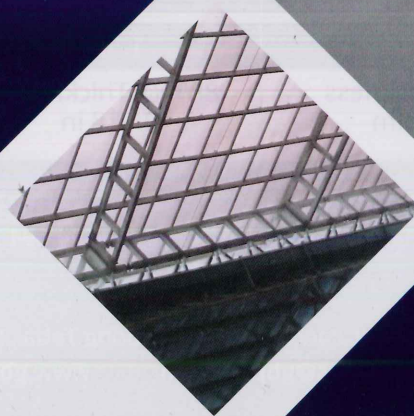
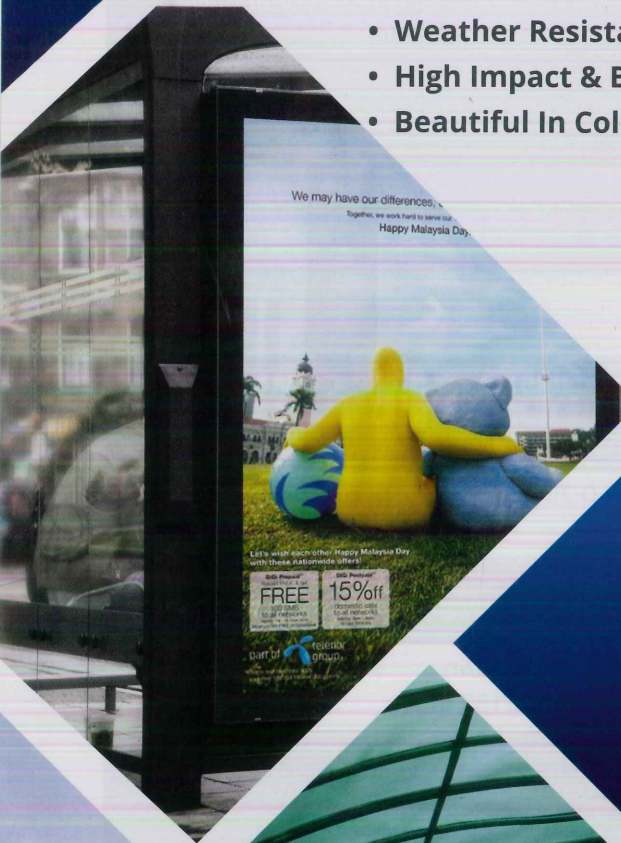
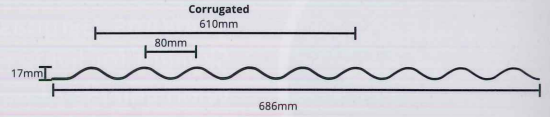
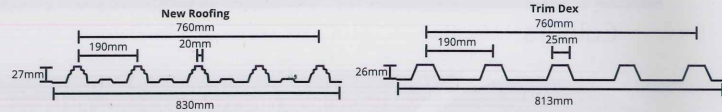
Fax: +604 598 3998

Email: sales@gbplas.com

www.gbplas.com

POLYCARBONATE (PC) SOLID & PROFILE SHEET

- Light Weight & Easy Handling
- Light Transmission Up To 90%
- Heat & Sound Insulation
- Weather Resistance With UV
- High Impact & Break Resistant
- Beautiful In Colours



GB PLAS SDN BHD
(638291-V)

YOUR PREMIUM PLASTIC SOLUTION

SPECIFICATIONS	SOLID / EMBOSSED	CORRUGATED	ROOFING	NEW ROOFING
Width	1.22m - 2.1m	686 mm (27")	813mm (32")	830mm
Thickness (+/-5%)	1mm - 30 mm	1mm - 2mm	1mm - 2mm	1mm - 2mm
Length	Sheet: 2.44m (8ft) Roll: 30.5m (100ft) Or any specific length	Standard 8ft - 20ft (2.44m - 6.10m) Or any specific length		
Colours	Clear or Custom Colours			

APPLICATIONS

For decoration, corridors & pavillions in gardens, recreational & residential places.
 For interior & exterior decorations of commercial & public buildings.
 Stadiums, Gymnasiums & sport clubs
 Skylight for living rooms, swimming pools, agriculture greenhouse & sheds
 Wind shields of motorcycles and helmet
 Sound insulation shields on express way & etc
 For instruments, panels & military industry
 Roofing for industry building

MATERIAL SPEC

PHYSICAL PROPERTIES	METRIC	ENGLISH	COMMENTS
Density	1.20g/cc	0.0434 lb/in ³	ISO 1183
Water Absorption	0.20%	0.20%	In water, 23 ^o C, 24h; ISO 62
Linear Mold Shrinkage	0.0050-0.0070 cm/cm @ Thickness 4.00 mm	0.0050-0.0070 in/in @ Thickness 0.157 in	
Linear Mold Shrinkage, Transverse	0.0050-0.0070 cm/cm @ Thickness 4.00 mm	0.0050-0.0070 in/in @ Thickness 0.157 in	
Melt Flow	8.4g/ 10 min @ Load 1.20kg, Temperature 300 ^o C	8.4g/ 10 min @ Load 2.65 lbTemperature 572 ^o F	ISO 1133
MECHANICAL PROPERTIES	METRIC	ENGLISH	COMMENTS
Tensile Strength, Yield	62.0 MPa	8990 psi	50mm/min; ISO 527
Elongation at Break	> = 50%	> = 50%	50mm/min; ISO 527
Elongation at Yield	6.00%	6.00%	50mm/min; ISO 527
Tensile Modulus	2.40 GPa	348 ksi	1mm/min; ISO 527
Flexural Strength	93.0 MPa	13500 psi	2mm/min; ISO 178
Flexural Modulus	2.35 GPa	341 ksi	2mm/min; ISO 178
Charpy Impact Unnotched	N/B	N/B	ISO 179
Charpy Impact Notched	7.60J/cm ²	36.2ft-lb/in ²	ISO 179
OPTICAL PROPERTIES	METRIC	ENGLISH	COMMENTS
Refractive Index	1.585	1.585	ASTM D542
Transmission, Visible	88% @ Thickness 3.00 mm	88% @ Thickness 0.118 in	ASTM D1003



CHANGKAT PLANT

No. 3785, Jalan Changkat, 14300 Nibong Tebal, S.P.S Penang, West Malaysia. Tel: +604 594 2333 Fax: +604 593 8718



BUKIT PANCHOR PLANT

2757, Mukim 7, Lorong Industri 2, Taman Perindustrian Bukit Panchor, 14300 Nibong Tebal, S.P.S Penang, West Malaysia.

Tel: +604 598 3996

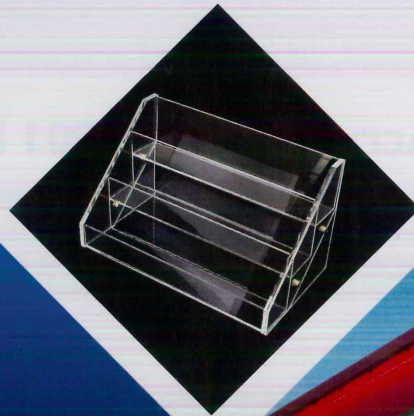
Fax: +604 598 3998

Email: sales@gbplas.com

www.gbplas.com

ACRYLIC (PMMA) SHEET

- High Hardness
- Pleasing Surface Appearance
- Good Chemical Resistance
- Good Weather Resistance
- High Clarity



GB PLAS SDN BHD

(638291-V)

YOUR PREMIUM PLASTIC SOLUTION

SPECIFICATIONS

Thickness:	1mm to 30mm
Thickness Tolerance:	+/-0.2mm
Maximum width:	2100mm (2.1m)
Length:	No Limit (sheet/ roll form)
Colour:	Clear or custom colours
Standard dimension:	1.22m x 1.83m/ 1.22m x 2.44m

APPLICATIONS

Appliances
 Electrical/ Electronic Applications
 Optical Applications
 Automotive Applications
 Advertising Signage
 Display Unit
 Light Boxes

MATERIAL SPEC - Acrypet® MF-001 PMMA

PHYSICAL PROPERTIES	METRIC	ENGLISH	COMMENTS
Density	1.19g/cc	0.0430 lb/in ³	ASTM D792
Water Absorption	0.30%	0.30%	24hrs.; ASTM D570
Linear Mold Shrinkage	0.0020-0.0060 cm/cm	0.0020-0.0060 in/in	ASTM D955
Melt Flow	14g/ 10min @Load 3.80kg, Temperature 230°C	14g/ 10min @Load 8.38lb, Temperature 446°F	ASTM D1238
MECHANICAL PROPERTIES	METRIC	ENGLISH	COMMENTS
Hardness, Rockwell M	90	90	ASTM D785
Tensile Strength at Break	65.7 MPa	9530 psi	ASTM D638
Elongation at Break	4.00%	4.00%	ASTM D638
Modulus of Elasticity	3.23 GPa	469 ksi	ASTM D638
Flexural Yield Strength	98.04 MPa	14220 psi	ASTM D790
Flexural Modulus	3.040 GPa	440.9 ksi	ASTM D790
Compressive Yield Strength	97.9 MPa	14200 psi	ASTM D695
Izod Impact, Notched	0.196J/cm	0.368 ft-lb/in	0.250 in; ASTM D256
Impact	115	115	cm Falling Ball Impact
OPTICAL PROPERTIES	METRIC	ENGLISH	COMMENTS
Refractive Index	1.49	1.49	ASTM D542
Transmission, Visible	93% @Thickness 3.20mm	93% @Thickness 0.126 in	ASTM D1003

CHANGKAT PLANT

No. 3785, Jalan Changkat, 14300 Nibong Tebal, S.P.S Penang, West Malaysia. Tel: +604 594 2333 Fax: +604 593 8718

BUKIT PANCHOR PLANT

2757, Mukim 7, Lorong Industri 2, Taman Perindustrian Bukit Panchor, 14300 Nibong Tebal, S.P.S Penang, West Malaysia.

Tel: +604 598 3996

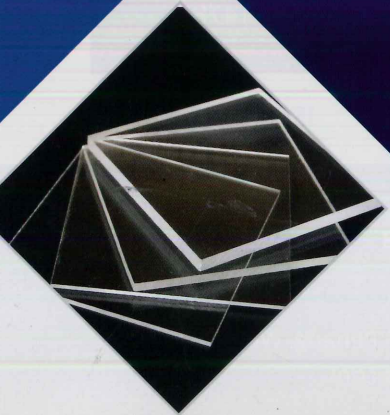
Fax: +604 598 3998

Email: sales@gbplas.com

www.gbplas.com

SMMA (METHYL METHACRYLATE STYRENE) SHEET

- Good Chemical Resistance
- Good Weather Resistance
- High Clarity
- High Hardness
- Pleasing Surface Appearance



GB PLAS SDN BHD

(638291-V)

YOUR PREMIUM PLASTIC SOLUTION

SPECIFICATIONS

Thickness:	1mm to 30mm
Thickness Tolerance:	+/-0.2mm
Maximum width:	2100mm (2.1m)
Length:	No Limit (sheet/ roll form)
Colour:	Clear or custom colours
Standard dimension:	1.22m x 1.83m/ 1.22m x 2.44m

APPLICATIONS

Appliances
 Electrical/ Electronic Applications
 Optical Applications
 Automotive Applications
 Advertising Signage
 Display Unit
 Light Boxes

MATERIAL SPEC

PHYSICAL PROPERTIES	METRIC	ENGLISH	COMMENTS
Specific Gravity	1.12g/cc	1.12g/cc	ASTM D792
Density	1.127g/cc	0.04072 lb/in ³	ISO 1133
Melt Flow	1.9g/10 min @ Load 5.00kg, Temperature 200 ^o C	1.9g/10 min @ Load 11.0 lb, Temperature 392 ^o F	ISO 1133
	26g/10 min @ Load 10.0kg, Temperature 220 ^o C	26g/10 min @ Load 22.0 lb, Temperature 428 ^o F	ISO 1133
MECHANICAL PROPERTIES	METRIC	ENGLISH	COMMENTS
Hardness, Rockwell M	86	86	ISO 2039-2
Tensile Strength at Break	70.0 MPa, 73.0 MPa	10200 psi, 10600 psi	5mm/min; ASTM D638 5mm/min; ISO 527-2
Elongation at Break	6.00%	6.00%	5mm/min; ISO 527-2
Flexural Strength	107 MPa	15500 psi	2mm/min; ASTM D790
	111 MPa	16100 psi	ISO 178
Flexural Modulus	3.32 GPa	482 ksi	2mm/min; ISO 178
	3.35 GPa	486 ksi	2mm/min; ASTM D790
Izod Impact Resistance	1.80J/cm ²	8.57 ft-lb/in ²	
Charpy Impact Notched	0.200J/cm ²	0.952 ft-lb/in ²	ISO 179-2
OPTICAL PROPERTIES	METRIC	ENGLISH	COMMENTS
Haze	0.20% @ Thickness 2.00 mm	0.20% @ Thickness 0.0787 in	ISO 14782
Transmission, Visible	92% @ Thickness 2.00 mm	92% @ Thickness 0.0787 in	ISO 13468-1



CHANGKAT PLANT

No. 3785, Jalan Changkat, 14300 Nibong Tebal, S.P.S Penang, West Malaysia. Tel: +604 594 2333 Fax: +604 593 8718



BUKIT PANCHOR PLANT

2757, Mukim 7, Lorong Industri 2, Taman Perindustrian Bukit Panchor, 14300 Nibong Tebal, S.P.S Penang, West Malaysia.

Tel: +604 598 3996

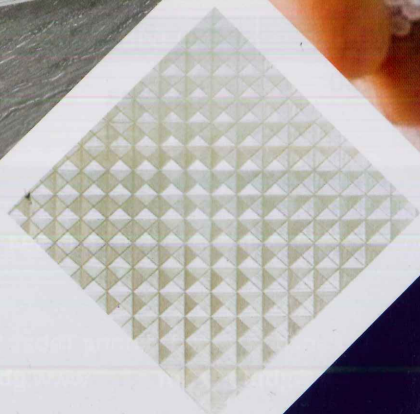
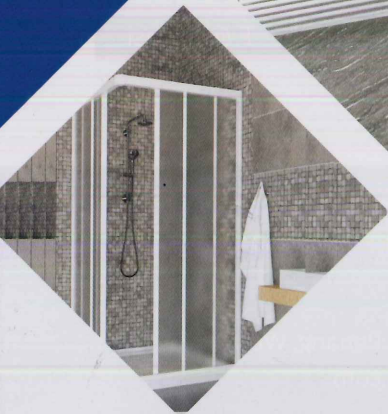
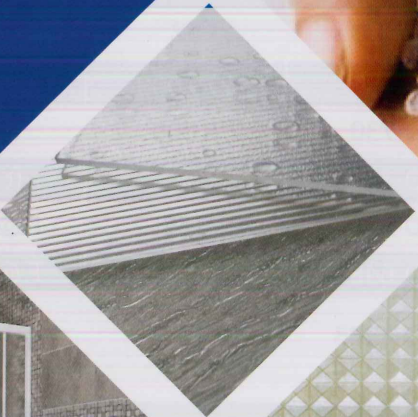
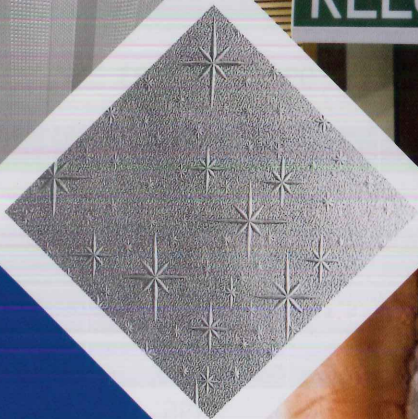
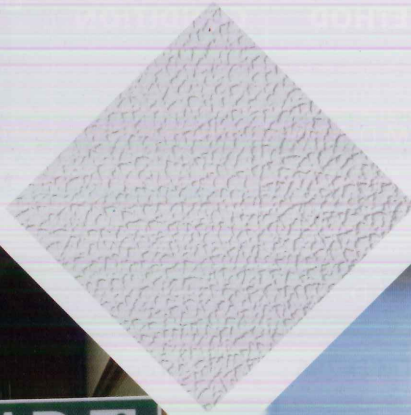
Fax: +604 598 3998

Email: sales@gbplas.com

www.gbplas.com

POLYSTYRENE (GPPS/HIPS) SHEET

- Light Weight & Easy Handling
- Low Density
- High Clarity
- Rigid



GB PLAS SDN BHD

(638291-V)

YOUR PREMIUM PLASTIC SOLUTION

SPECIFICATIONS

Thickness:	1mm to 30mm
Thickness Tolerance:	+/-0.2mm
Maximum width:	2100mm (2.1m)
Length:	No Limit (follow customer needs)
Colour:	Clear or custom colours
Standard dimension:	1.22m x 1.83m/ 1.22m x 2.44m

APPLICATIONS

Shower Screen
Signage
Lighting Equipment

PATTERNS

Fine Matte
Rain Drop, Star Drop, Tree Bark, Train Rail
Prismatic # 12 & # 15

GPPS

ASTM	TEST METHOD	TEST CONDITION	UNIT	GPPS SERIES		
				MF-21-301	MW-1-301	MW-1H-321
				HIGH FLOW HIGH HEAT	HIGH STRENGTH	HIGH HEAT HIGH RIGIDITY
Melt Flow Rate	ASTM D-1238	200°C, 49N	g/10min	4.8	1.9	1.5
Tensile Strength	ASTM D-638	5min/min	MPa	47	47	50
Elongation at Break			%	<3	<3	<3
Flexural Modulus	ASTM D-790	2min/min	MPa	3400	3350	3400
Flexural Strength			MPa	88	85	89
Izod Impact Strength	ASTM D-256	23°C. Notched	J/m	16	18	18
Heat Deflection Temperature	ASTM D-648	1.8Mpa Edgewise method	°C	87	81	91
Vicat Softening Temperature	ASTM D-1525	50N	°C	99	93	100
Rockwell Hardness	ASTM D-785	23°C	M	75	75	75
Density	ASTM D-792	23°C	-	1.05	1.05	1.05

HIPS

PATTERNS	GENERAL	ASTM TEXT	ENGLISH	
			VALUES	UNITS
	Specific Gravity/Density	D-792	1.04	lb/ft ³
	Hardness, Rockwell	D-785	R95	-
MECHANICAL	Tensile Strength	D-638	2,750	psi
	Elongation @ Break	D-638	52	%
	Flexural Modulus	D-730	275,000	psi x 10 ⁵
	Flexural Strength	D-730	6,000	psi
	Izod Impact	D-256	2	ft lb/in
THERMAL	Hea: Deflection Temp	D-648	189	F @66psi
	Hea: Deflection Temp	D-648	165	F @264psi
	Melt Flow Rate MFR 230 C/3.8kg	D-1238	2	g/10min



CHANGKAT PLANT

No. 3785, Jalan Changkat, 14300 Nibong Tebal, S.P.S Penang, West Malaysia. Tel: +604 594 2333 Fax: +604 593 8718



BUKIT PANCHOR PLANT

2757, Mukim 7, Lorong Industri 2, Taman Perindustrian Bukit Panchor, 14300 Nibong Tebal, S.P.S Penang, West Malaysia.

Tel: +604 598 3996

Fax: +604 598 3998

Email: sales@gbplas.com

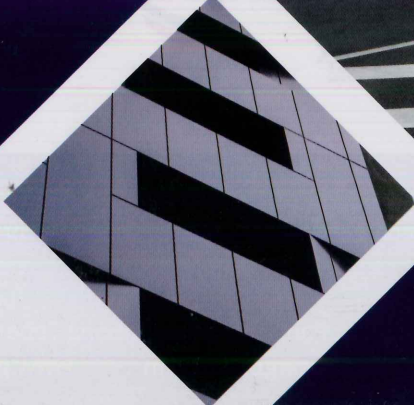
www.gbplas.com

GB BOND ALUMINIUM COMPOSITE PANEL

QUALITY ASSURANCE LIKE NONE OTHER

8 E'S PRODUCT ADVANTAGES

- Effortless installation and fabrication
- Easy maintenance
- Even coating and countless colours
- Exceptional UV characteristics
- Excellent flatness and lightweight
- Enhanced forming performance
- Eco-friendly
- Elevated value



GB PLAS SDN BHD

(638291-V)

YOUR PREMIUM PLASTIC SOLUTION

GB BOND: Your SMARTER choice

GB BOND is a composite material made from aluminium and polyethylene. With its high rigidity, light weight and exceptional flatness. GB Bond is a versatile decorative material used in major industries worldwide. Such like advertisement, signage, and in the construction industry.

As our slogan goes "Quality like none other", you can expect nothing short of greatness for GB Bond Aluminium Composite Panel.



YOUR TRASH OUR TREASURE

Part of GB Plas' commitment to greener environment, our valued customers are encouraged to send back offcut/ side trim to us instead of wasteful disposal.

Product Specification GB BOND Composite Panel Size

Panel Thickness	Aluminium Skin Thickness	Width (W)	Length (L)
2mm, 3mm, 4mm	0.1, 0.2, 0.4	1220mm	Up to 24ft
4mm	0.2, 0.4	1220mm, 1250mm	Up to 24ft

Weight for 0.1 aluminium skin: 3mm: 2.7kg/m²
4mm: 4.1kg/m²

Tolerance: • Width ± 2mm • Length ± 4mm • Thickness ± 0.2mm



CHANGKAT PLANT

No. 3785, Jalan Changkat, 14300 Nibong Tebal, S.P.S Penang, West Malaysia. Tel: +604 594 2333 Fax: +604 593 8718



BUKIT PANCHOR PLANT

2757, Mukim 7, Lorong Industri 2, Taman Perindustrian Bukit Panchor, 14300 Nibong Tebal, S.P.S Penang, West Malaysia.

Tel: +604 598 3996

Fax: +604 598 3998

Email: sales@gbplas.com

www.gbplas.com

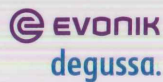
VIRGIN RAW MATERIAL

We source prime virgin resin from worldwide countries such as Japan, USA, Taiwan, Europe and Korea. The selection criteria for the prime virgin resin are dependant on clients' specifications and requirements.

Plastic Material

PMMA (Acrylic) . PC . MS . GPPS . PP . PE . ABS . HIPS & etc.

The superior quality of our products begins with the selection of resin. Depending on our customers' requirements, we provide virgin resin in our production process.



CHIMEI

TEIJIN

DENKA

TORAY

MAKROLON

Integrated Excellence

Strict quality control is integrated into every aspect of GB PLAS' operations from the storage of raw materials to production to delivery. Our ISO certified facilities ensure that orders are created to the highest standards with rapid production times.

The superior quality of our products begins with the selection of resin. Depending on our customers' requirements, we provide virgin resin in our production process.

PIONEER & LEADING PRODUCER OF EXTRUDED PLASTIC SHEETS

GB PLAS SDN BHD (638291-V)

CHANGKAT PLANT

No. 3785, Jalan Changkat, 14300 Nibong Tebal, S.P.S Penang West Malaysia.

☎ +604 - 594 2333 📠 +604 - 593 8718

BUKIT PANCHOR PLANT

2757, Mukim 7, Lorong Industri 2, Taman Perindustrian Bukit Panchor, 14300 Nibong Tebal, S.P.S Penang West Malaysia.

☎ +604 - 598 3996 📠 +604 - 598 3998